



Mount Vernon

2021 PARKS MASTER PLAN

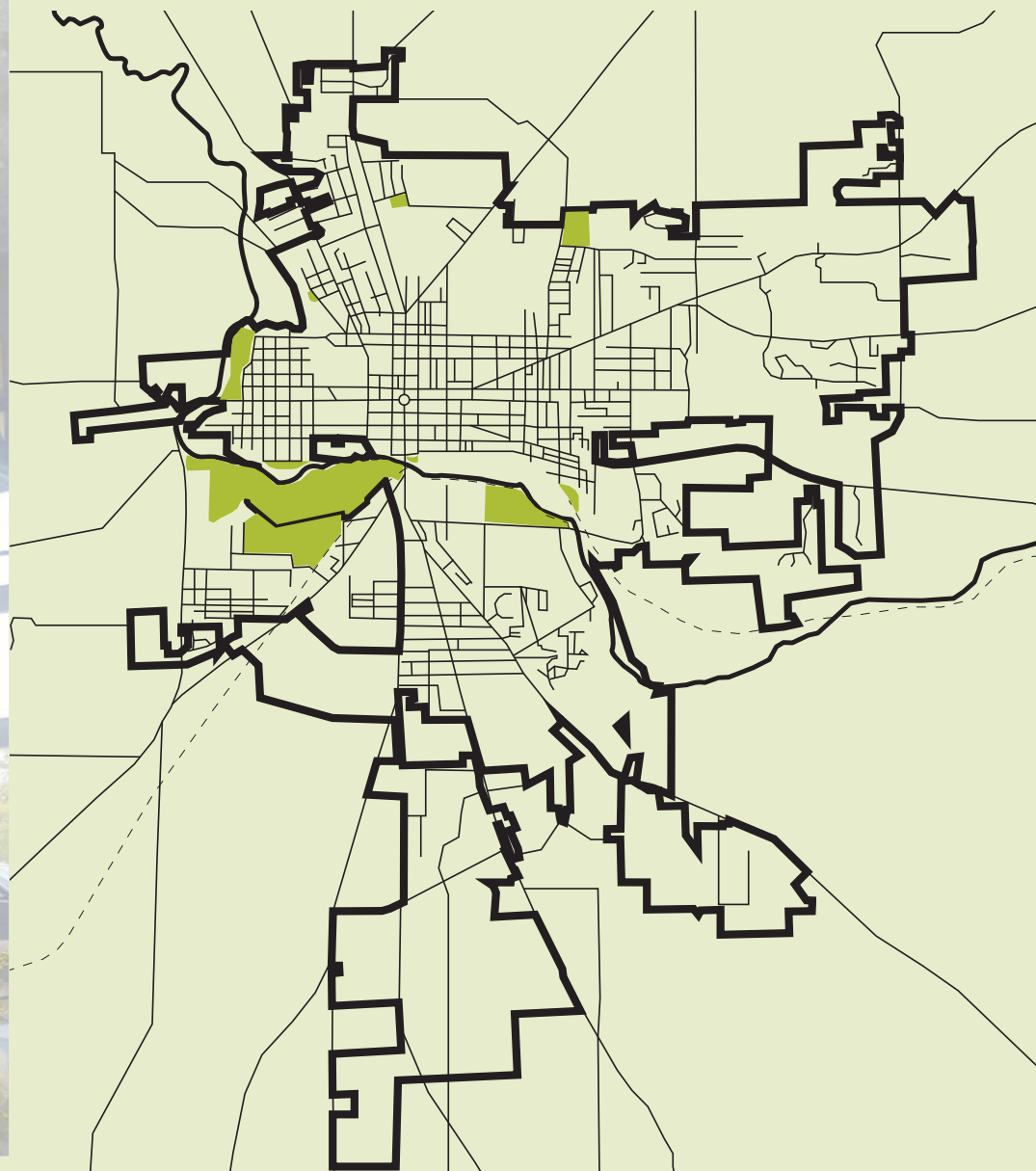


TABLE OF CONTENTS

1. INTRODUCTION

- CURRENT CITY PROJECTS
- GOALS AND OBJECTIVES

2. PRIORITY PARKS

- MEMORIAL PARK
 - + EXISTING
 - + GOALS
 - + PROPOSED
- RIVERSIDE PARK
 - + EXISTING
 - + GOALS
 - + PROPOSED
- CA&C RAILROAD DEPOT
 - + EXISTING
 - + GOALS
 - + PROPOSED

3. SECONDARY PARKS

- ARIEL-FOUNDATION PARK
- ARCH PARK
- DAN EMMETT PARK
- HIAWATHA PARK
- PHILLIPS PARK
- SHELLMAR PARK

4. IMPLEMENTATION STRATEGIES

- FUTURE PARK ELEMENTS
- CITY GOALS
- CITY/PARK TRAILS



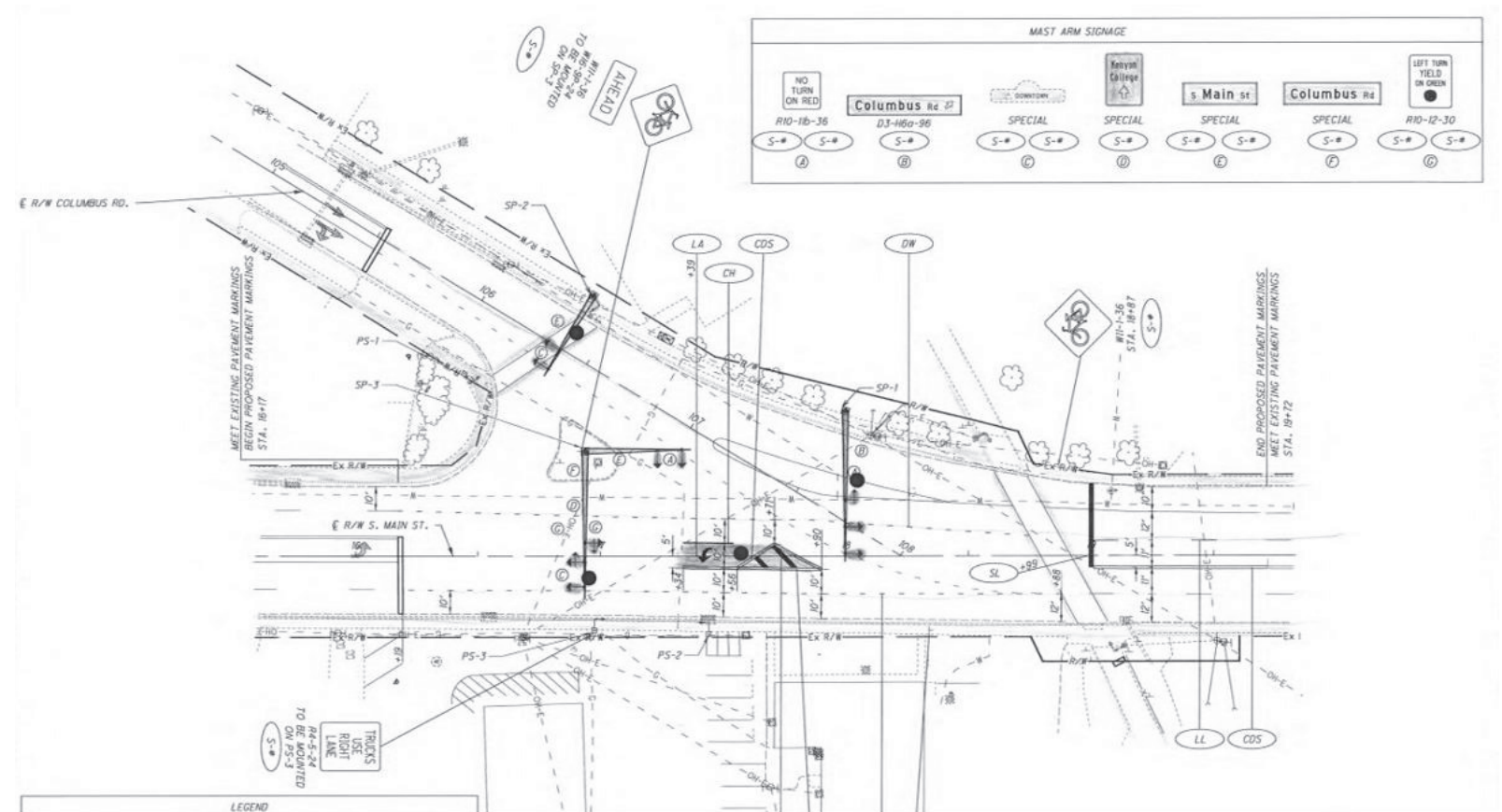
INTRODUCTION

CURRENT CITY PROJECTS



KOKOSING RIVER RESTORATION

- + FLOODPLAIN ACCESS & HABITAT ENHANCEMENT
- + RIVER RESTORATION IN BACKWATER AREAS
- + RIVER BANK PROTECTION



SOUTH MAIN/COLUMBUS ROAD INTERSECTION

- + MOVING TRAFFIC SIGNAL FURTHER SOUTH
- + CENSORED EXIT SIGNAL ADDITION AT WHITS
- + DEDICATED SOUTHBOUND LEFT TURN LANE
- + CROSSWALK FROM THE DEPOT TO SPEEDWAY

GOALS & OBJECTIVES

1. SAFETY

- + ADA ACCESSIBILITY
- + WALK WAYS
- + CROSSWALKS
- + SIGNAGE

2. COMMUNITY ENGAGEMENT


- + ABILITY TO HOLD COMMUNITY EVENTS
- + EASY PARK ACCESS


3. REINVIGORATE THE PARKS

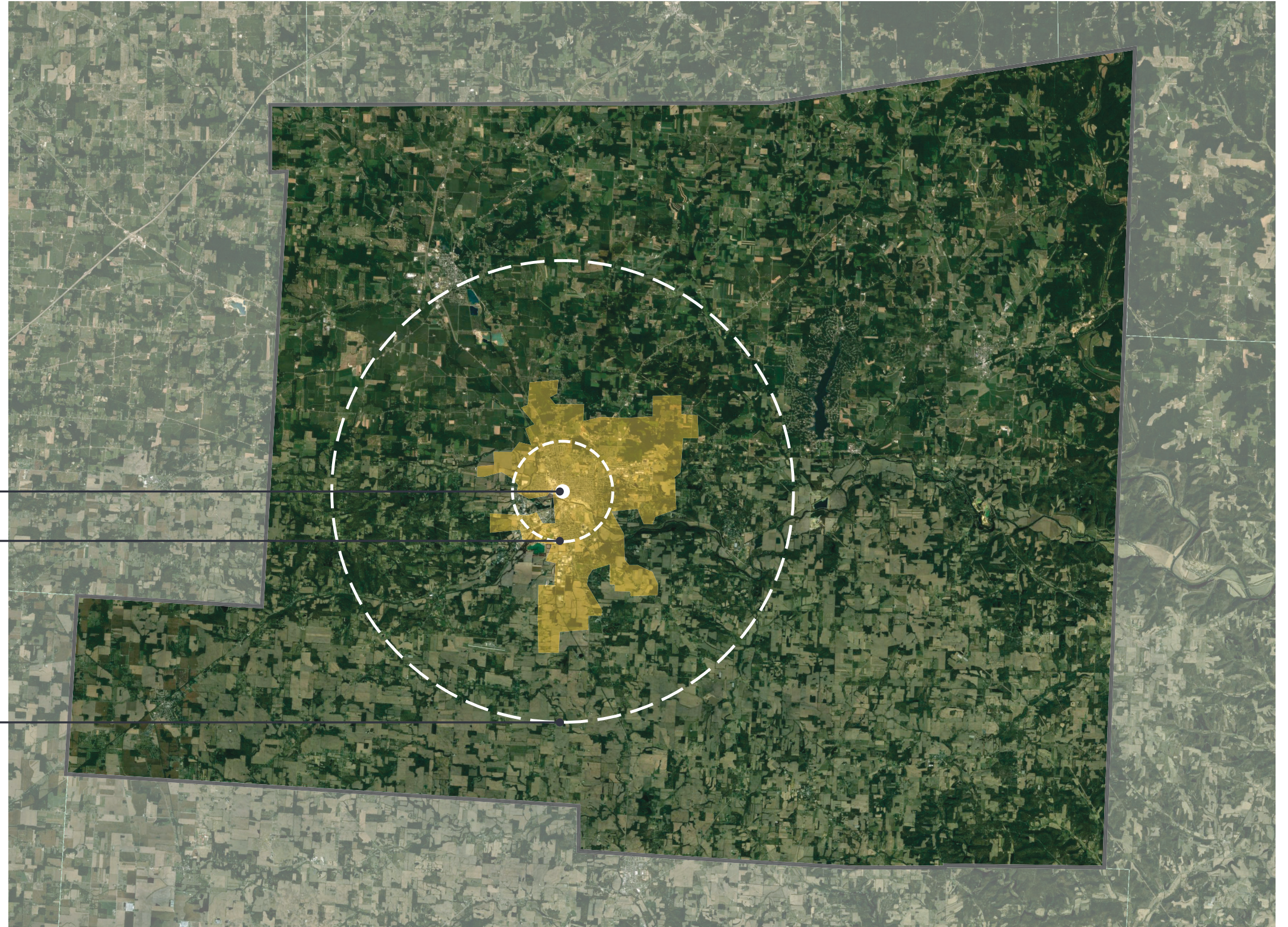
- + CONNECTIONS BETWEEN THE PARKS
- + UPDATED BUILDINGS & EQUIPMENT
- + CONSISTENCY AMONG PARKS

KNOX COUNTY

MOUNT VERNON CITY HALL

1.5 MILE RADIUS
[15 MINUTE ]

5 MILE RADIUS
[15 MINUTE ]



MOUNT VERNON



ARCH PARK

ARIEL-FOUNDATION PARK

CA&C RAILROAD DEPOT

DAN EMMETT PARK

HIAWATHA PARK

MEMORIAL PARK

PHILLIPS PARK

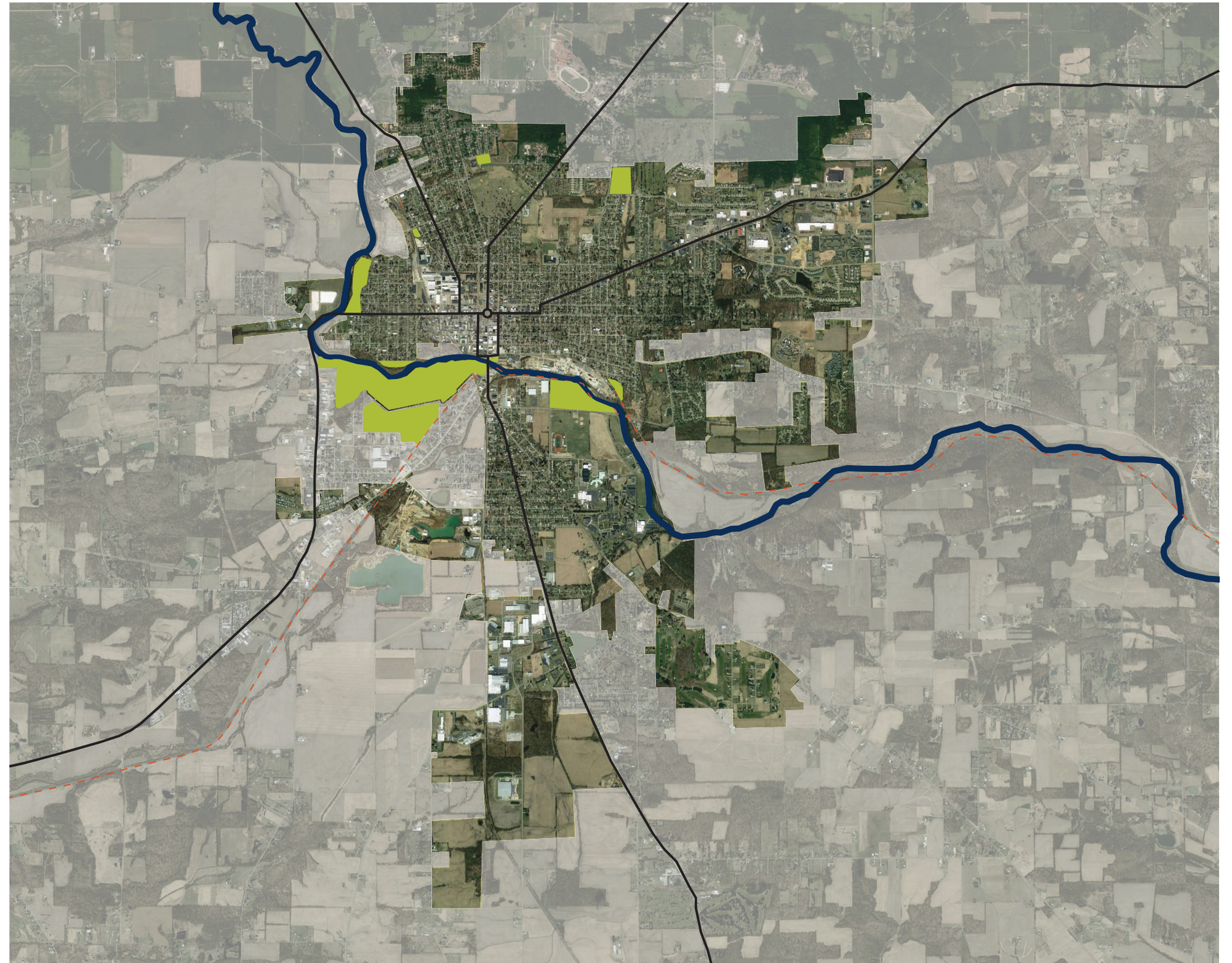
RIVERSIDE PARK

RIVERVIEW PARK

SHELLMAR PARK

KOKOSING RIVER

OHIO TO ERIE TRAIL





PRIORITY PARKS

MEMORIAL PARK

37.5 ACRES: COMMUNITY PARK



PAIN POINTS

- LACK OF WALKWAYS
- LACK OF SIGNAGE
- LACK OF GATHERING SPACES
- LACK OF ADA ACCESSIBILITY
- NO CONNECTION TO KOKOSING TRAIL
- SITE CHALLENGES
 - + DIRECTIONAL TRAFFIC
 - + LOCATED IN FLOODPLAIN
- SKATE PARK
 - + SMALL WITH METAL FIXTURES
 - + LIMITED PARKING
 - + CRACKS IN PAVEMENT
- BASKETBALL COURTS
 - + PAVEMENT CONDITION
 - + LIGHTING
- PICKLE BALL & TENNIS COURTS
 - + SURFACE CONDITION
 - + LIGHTING

MEMORIAL PARK

PARK INVENTORY: EXISTING IMAGERY



MEMORIAL PARK

PARK INVENTORY: EXISTING IMAGERY



MEMORIAL PARK

EXISTING

Memorial Park is a community park centrally located between the middle school/high school and downtown. It is home to many baseball & softball tournaments, access to the Kokosing Trail and several tennis & pickle ball courts.

Although the location & land are nestled between the school, downtown and shady trees, some of the amenities are in need of improvement. Playground equipment is bent & chipped; concessions & press boxes are run down and do not comply with current building codes; the skate park is a tripping hazard; and the basketball, pickle ball, & tennis courts all need resurfaced. The park also experiences storm flooding & standing water. The storm-water system needs improvement.



MEMORIAL PARK GOALS

SPORTS

- BALL FIELDS
 - + REORIENT BALL FIELDS AND CREATE SPORT COMPLEXES
 - + CONCESSIONS/RESTROOMS/PRESS BOX
 - + CREATE MAINTENANCE PLAN
- TENNIS AND PICKLE BALL COURTS
 - + DIG OUT AND REINSTALL UP TO CORRECT STANDARDS
 - + PROVIDE LIGHTING & BLEACHERS
 - + CREATE MAINTENANCE AND RESURFACING PLAN
- BASKETBALL COURTS
 - + RELOCATE & RESURFACE
 - + PROVIDE LIGHTING & BENCHES
 - + CREATE MAINTENANCE AND RESURFACING PLAN

FAMILY GATHERING

- 3 NEW SHELTERS
 - + DEDICATE EACH & PROVIDE SIGNAGE
 - + PROVIDE LIGHTING & GRILLS AT EACH

RIVER ACCESS

- RENTAL DROP OFF
- FISHING
 - + FISHING POLE RENTAL
 - + PROVIDE FISHING POLE HOLDERS
 - + PROVIDE WEEKEND BAIT STAND

PLAY

- PLAYGROUNDS
 - + RID OF ALL PLAYGROUNDS EXCEPT FOR HARMONY PARK
 - + CREATE NEW & UPDATED PLAYGROUND BESIDE HARMONY PARK
 - + PROVIDE BENCHES AT EACH CORNER OF THE PLAYGROUNDS
 - + CREATE MAINTENANCE PLAN

ADDITIONAL GOALS

- CREATE 1 MILE WALKING LOOP AROUND PARK
- CREATE MORE ADA PARKING
- ADA ACCESSIBLE RESTROOMS CLOSER TO HARMONY PARK
- CREATE HISTORICAL MURAL IN GAZEBO
- PROVIDE BIKE RACKS AT EACH ACCESS POINT
- PROVIDE SIGNAGE

MEMORIAL PARK

PARK ELEMENTS

WHAT IS THE GRAFFITI/CLIMBING WALL?

- CURVED & BUILT OF BRICK
- CREATES NOOKS FOR GATHERING



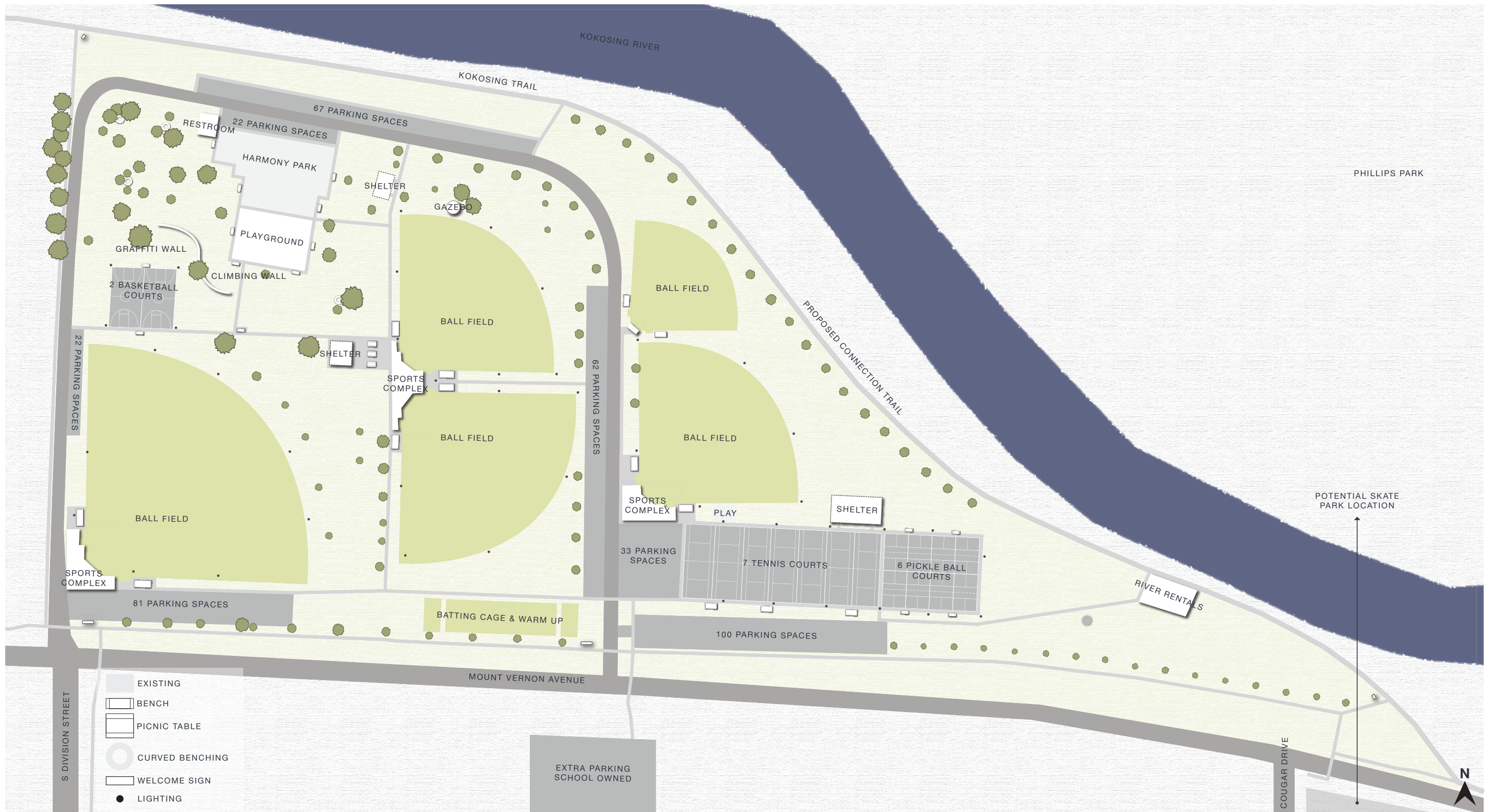
GRAFFITI WALL GIVES ARTISTS FREEDOM OF EXPRESSION AND BUILDS CREATIVITY



CLIMBING WALL BUILDS STRENGTH, CONFIDENCE & INDEPENDENCE TO SCALE ACROSS AT A MINIMAL HEIGHT



THE SEATING NOOK ALONG THE CURVES CREATES AN ENCLOSED GATHERING SPACE APPROPRIATE FOR ALL AGES



MEMORIAL PARK

The original one-way road has widened to a two-way and rerouted to avoid multiple access points. Designated parking spaces have been added to comfortably fit more cars. The fields have been reoriented for 3 sports complexes that contain a concession stand, press box, and either a restroom or maintenance building. A warm-up area has been created with a field to throw and 2 batting cages. There are bathrooms in 3 locations, all ADA accessible. There are 3 shelters and several picnic tables & benches throughout. There are 3 playgrounds and 1 climbing/graffiti wall. The basketball, pickle ball and tennis courts have been resurfaced & more pickle ball and tennis courts have been added. A walking trail surrounds the park.

MOUNT VERNON PARKS | MASTER PLAN



MKC | ARCHITECTS

RIVERSIDE PARK

24.5 ACRES: COMMUNITY PARK



PAIN POINTS

- POOR CONNECTION WITHIN PARK
 - + DIKE ROAD SPLITS BETWEEN NORTH & SOUTH
 - + NO ORGANIZATIONAL FLOW
- INADEQUATE PATHWAYS
 - + TO RIVER ACCESS
 - + NORTH & SOUTH PARK AREAS
 - + TO BALL FIELD
- PLAYGROUNDS
 - + EQUIPMENT IS BENT & CHIPPED
 - + SCATTERED PLAY PODS
 - + ACCESSIBLE SWING NOT INCLUSIVE
- PICKLE BALL COURTS
 - + INCORRECT ORIENTATION
 - + SURFACE CONDITION
 - + LIGHTING
- BASKETBALL COURTS
 - + ONLY HALF COURT
 - + SURFACE CONDITION
- BALL FIELD
 - + NO CONCESSION

RIVERSIDE PARK

SOUTH PARK INVENTORY: EXISTING IMAGERY



RIVERSIDE PARK

NORTH PARK INVENTORY: EXISTING IMAGERY

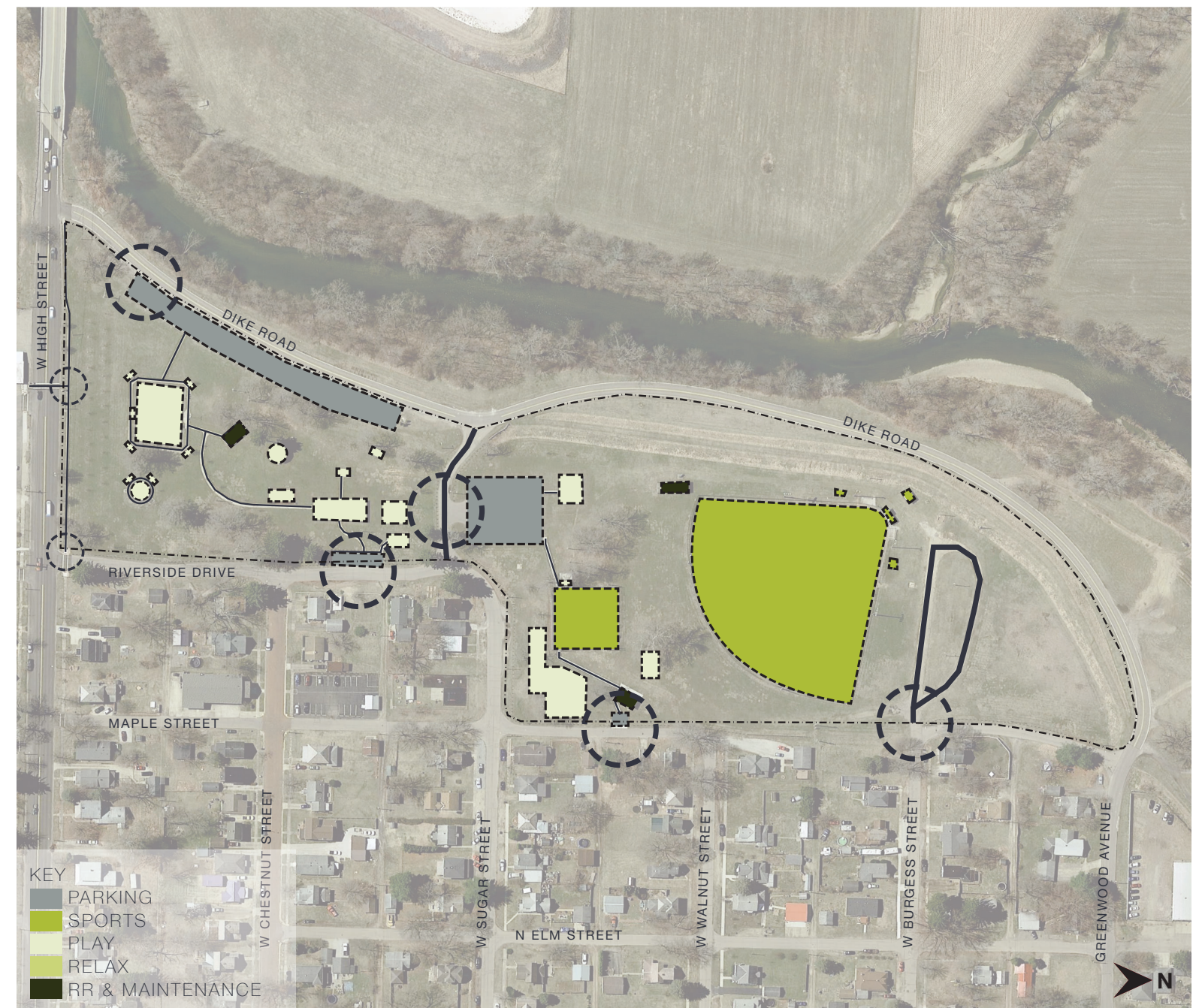


RIVERSIDE PARK

EXISTING

Riverside Park is a community park located on the west side of town between the dike and a residential neighborhood. It is home to rotary park centennial, various playground equipment, 4 pickle ball courts, 1 half basketball court, 1 baseball field and river access on the kokosing river.

The location of Riverside Park is great, being adjacent to a residential neighborhood. The neighborhood allows for ease of access & passive supervision, however, the dike interrupts the west side of the park, and dike road divides the north & south side of the park. The pickle ball & basketball courts are cracked, playground equipment is dented & chipped and the existing fountain is rarely observed. Parking is adequate, however, the north end of riverside park is in need of spaces for ease of access.



RIVERSIDE PARK GOALS

SPORTS

- BALL FIELD
 - + REORIENT BALL FIELD AND CREATE SPORT COMPLEX
 - CONCESSIONS/RESTROOMS/PRESS BOX
 - + CREATE MAINTENANCE PLAN
- PICKLE BALL COURTS
 - + DIG OUT AND REINSTALL UP TO CORRECT STANDARDS
 - + PROVIDE LIGHTING & BLEACHERS
 - + CREATE MAINTENANCE AND RESURFACING PLAN
- BASKETBALL COURTS
 - + RELOCATE & RESURFACE
 - + PROVIDE LIGHTING & BENCHES
 - + CREATE MAINTENANCE AND RESURFACING PLAN

FAMILY GATHERING

- 1 NEW SHELTER
 - + DEDICATE & PROVIDE SIGNAGE
 - + PROVIDE LIGHTING
- 1 EXISTING SHELTER
 - + DEDICATE & PROVIDE SIGNAGE
- GAZEBO
 - + POWER WASH & REPAINT
 - + TRANSITION TO AMPHITHEATER

PLAY

- 1 NEW PLAYGROUND
 - + CREATE LARGE SENSORY PLAYGROUND
 - + PROVIDE A BENCH AT EACH CORNER
- SPLASH PAD
 - + CONVERT FOUNTAIN TO A SPLASH PAD
 - + PROVIDE PUMP ROOM & RESTROOM
 - + PROVIDE BENCHES

RIVER ACCESS

- CROSSWALK & SIGNAGE ACROSS DIKE ROAD
- UPDATE CURRENT PARKING LOT
- PROVIDE LIGHTING & TRASH ENCLOSURES
- RENTALS
 - + KAYAKS
 - + TUBES

ADDITIONAL RECOMMENDATIONS

- CREATE A .85 MILE WALKING LOOP AROUND PARK
- REMOVE THE ROAD CUTTING THROUGH THE MIDDLE
- PROVIDE CROSSWALKS TO RESIDENTIAL NEIGHBORHOOD
- PROVIDE BIKE RACKS AT EACH ACCESS POINT
- PROVIDE SIGNAGE

RIVERSIDE PARK

EARLY-WORKS ENVIRONMENT

WHAT IS THE EARLY-WORKS ENVIRONMENT?

- FITS A WIDE AGE RANGE
- TACKLES LOGIC & CREATIVITY BASED PLAY



RIVERSIDE PARK

PARK ELEMENTS



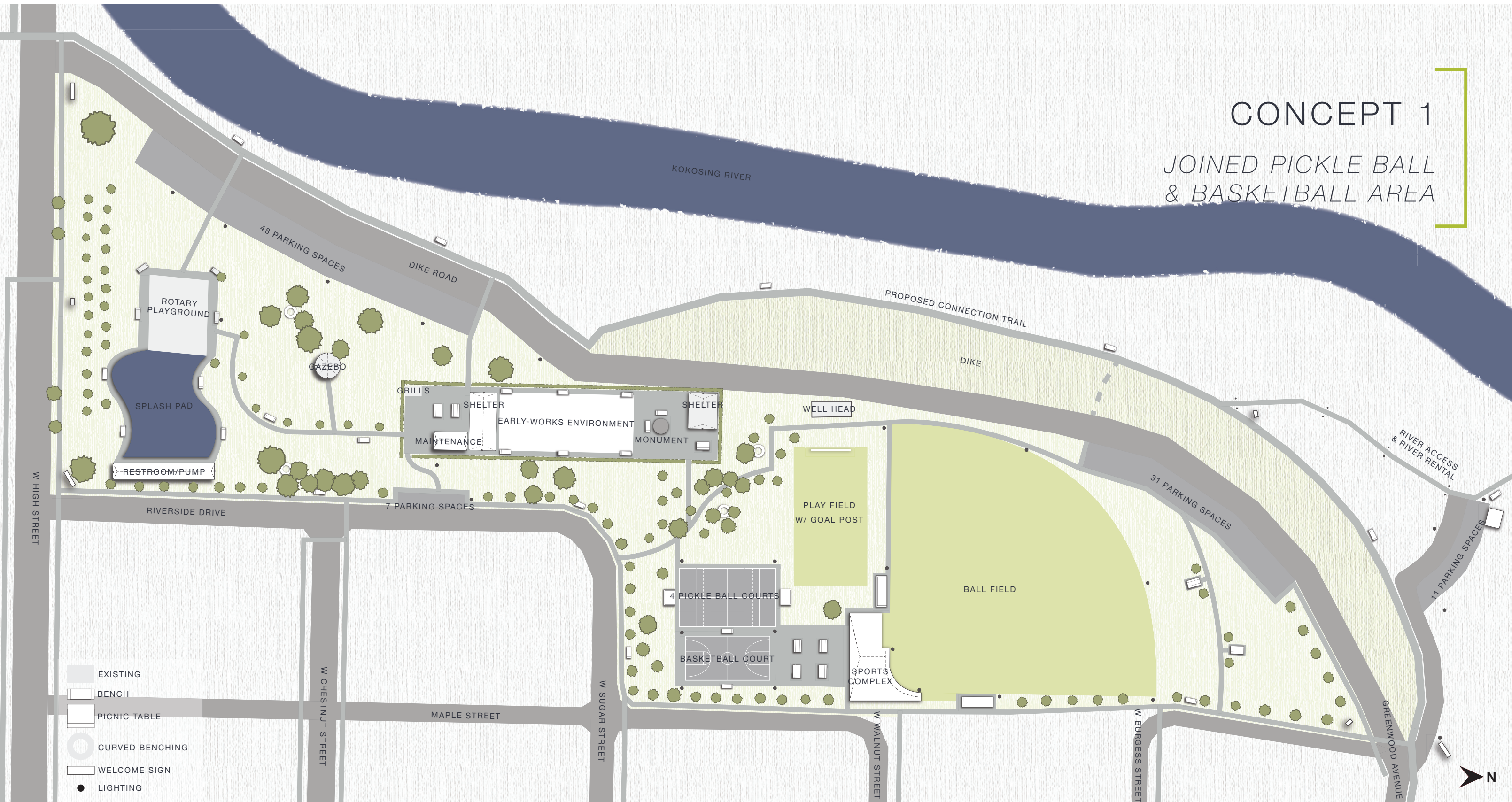
CLEARED, EASILY ACCESSIBLE, LIT PATH TO THE RIVER



SHADED STRUCTURE WITH BOOTH UNDERNEATH FOR RIVER RENTALS & SEATING

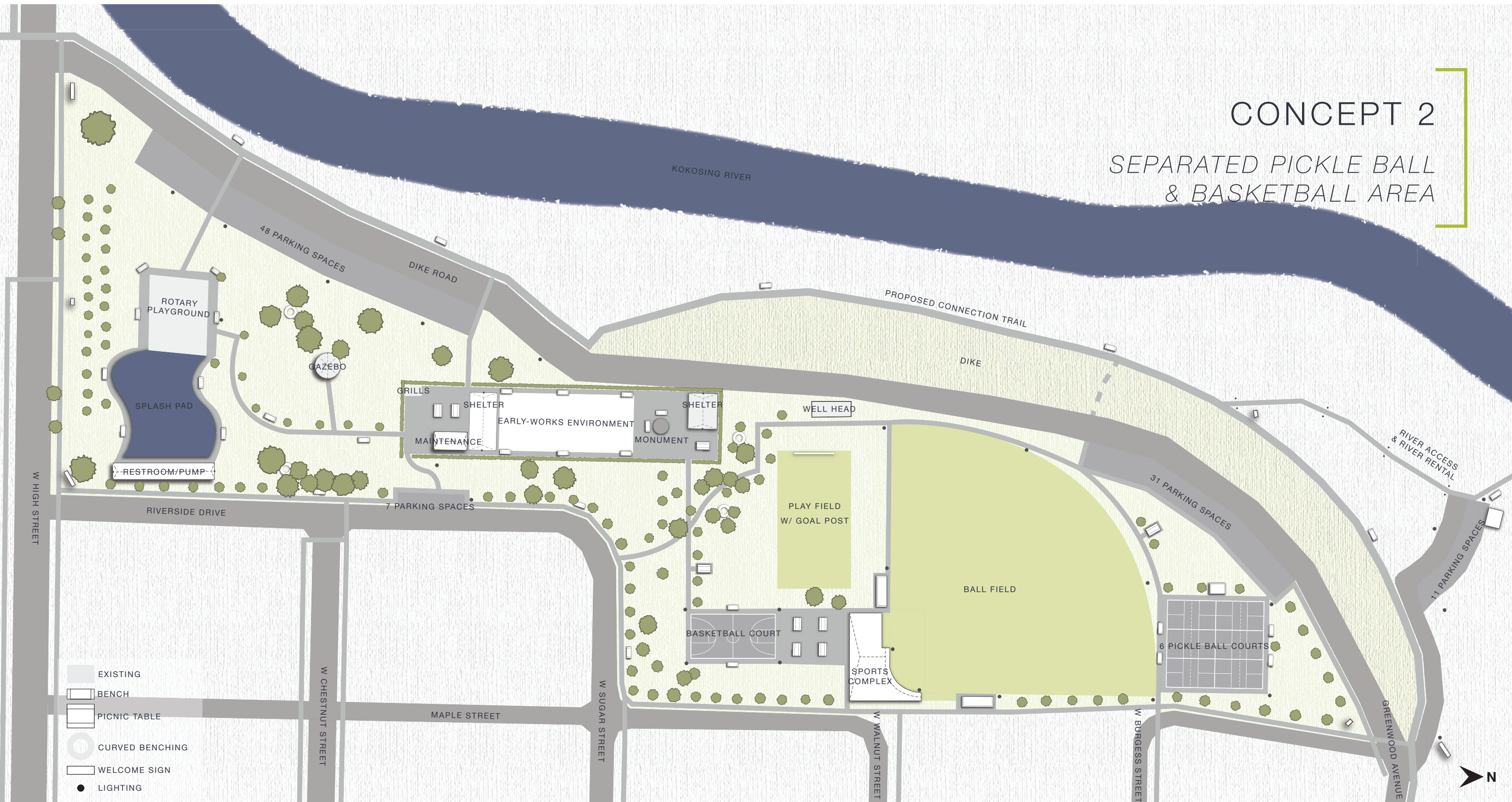
CONCEPT 1

JOINED PICKLE BALL & BASKETBALL AREA



CONCEPT 2

SEPARATED PICKLE BALL & BASKETBALL AREA



- EXISTING
- BENCH
- PICNIC TABLE
- CURVED BENCHING
- WELCOME SIGN
- LIGHTING

RIVERSIDE PARK

Dike Road on the West side has been rerouted to unify the North & South ends of the park. The baseball field has been reoriented to create a sports complex with a concession stand, press box & restrooms for the field, basketball court and pickle ball courts. The fountain has been removed and replaced with a splash pad adjacent to Rotary Park. The center of the park holds 2 shelters for gathering and 1 large interactive & learning playground. The river access has a path leading up to with a rentals booth, parking lot and ample lighting. A walking trail surrounds the park.



CA&C RAILROAD DEPOT

5.8 ACRES: NEIGHBORHOOD PARK



PAIN POINTS

- HEART OF MOUNT VERNON METRO PARKS
 - + MINIMAL SIGNAGE
 - + TRAIL ENTRANCE EXPERIENCE
- SITE CHALLENGES
 - + RAILROAD IS STILL ACTIVE
- PARK ISSUES
 - + ROOF NEEDS REPLACED
 - + NO BENCHES NEAR RIVER
 - + NO SPECIFIED ADA PARKING
 - + NO EVENING OR WEEKEND RESTROOM ACCESS

CA&C RAILROAD DEPOT

PARK INVENTORY: EXISTING IMAGERY

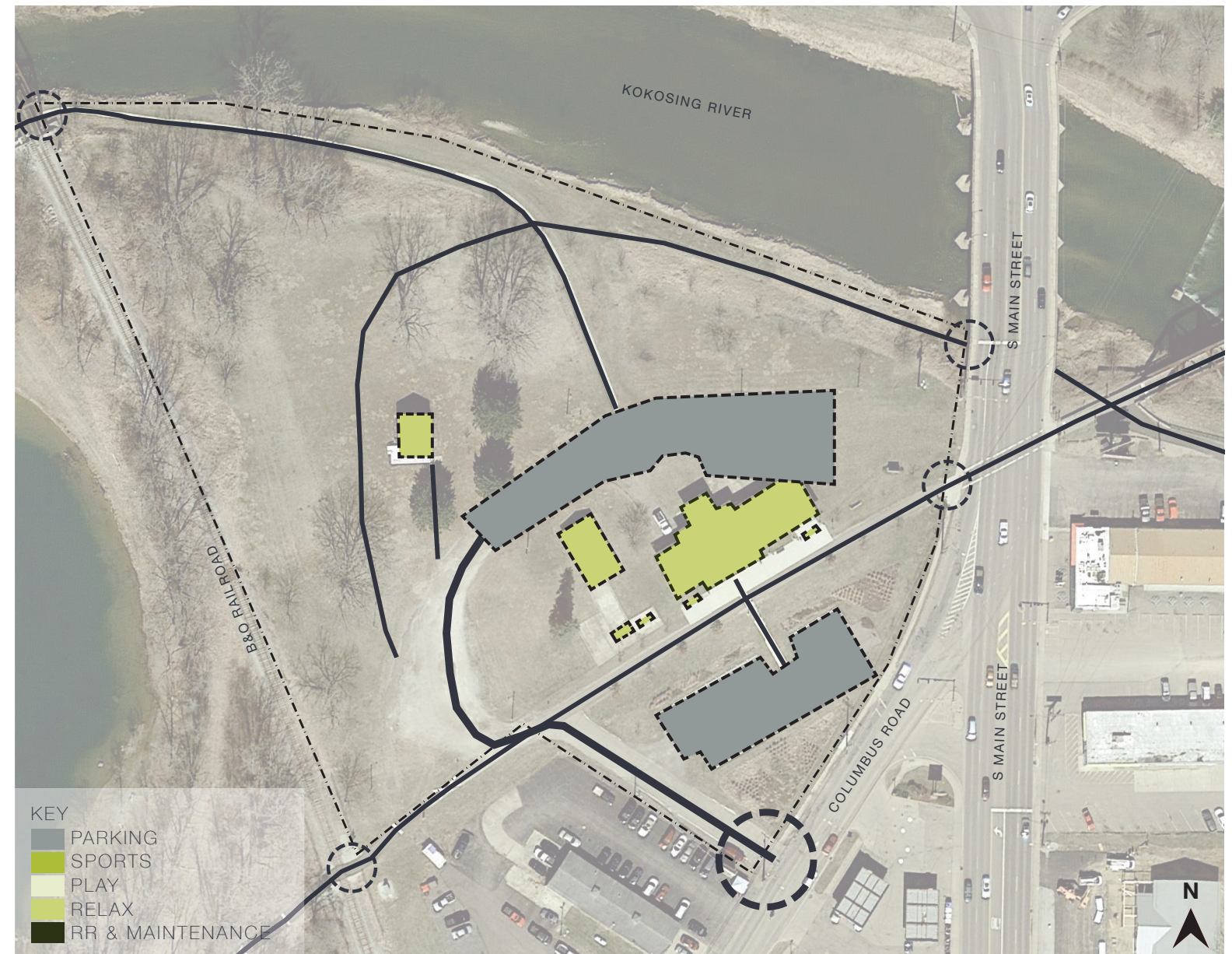


CA&C RAILROAD DEPOT

EXISTING

Located at the city's busiest intersection, CA&C Railroad Depot is the welcoming site to the city of Mount Vernon. It is home to the Knox County Chamber of Commerce, Main Street Mount Vernon & Knox County Convention as well as the Visitors Bureau Offices. It has direct trail access and located on the Kokosing River.

The CA&C Railroad Depot is a newly restored building with very minimal amenities on site. The park only has 2 benches alongside the trail and 1 shelter. There is also no restroom access when the ca&c building is closed and the site requires accessible parking.



CA&C RAILROAD DEPOT GOALS

COMMUNITY ENGAGEMENT

- PROVIDE MORE HISTORY QR CODE SIGNAGE
- MOUNT VERNON HISTORY NIGHT
- PROVIDE AMPLE OUTDOOR ELECTRICITY
- PROVIDE FOOD TRUCK PARKING

FAMILY GATHERING

- SHELTER
 - + DEDICATE & PROVIDE SIGNAGE
 - + PROVIDE 2 GRILLS
- PROVIDE 5 BENCHES ALONG RIVERFRONT TRAIL
- PROVIDE 3 BENCH SWINGS ALONG RIVERFRONT TRAIL
- PROVIDE PICNIC TABLES ALONG BACK LOT

RIVER ACCESS

- FISHING
 - + FISHING POLE RENTAL
 - + PROVIDE FISHING POLE HOLDERS
 - + PROVIDE WEEKEND BAIT STAND

ADDITIONAL RECOMMENDATIONS

- FIRST RESPONDERS MEMORIAL
 - + TO BE DESIGNED WITH ARTIST
 - + PROVIDE CONCRETE PAD
 - + PROVIDE BENCHES
 - + PROVIDE LIGHTING
- MONUMENT
 - + PROVIDE CONCRETE PAD
 - + PROVIDE BENCHES
 - + PROVIDE LIGHTING
- EMMETT HOUSE
 - + SIGNAGE FOR THE HISTORY
 - + SIGNAGE FOR WHERE ALL IT HAS BEEN LOCATED
- PROVIDE RESTROOM NEAR TRAIL
- PROVIDE CROSSWALK OVER PHILLIPS DRIVE FOR DOWNTOWN ACCESS
- PAVE SECOND LOT
- PROVIDE ADA PARKING
- ROOF REPLACEMENT

RIVERSIDE PARK

PARK ELEMENTS



SWING BENCHES FOR RELAXATION
AND SITE VIEWING



SHADED STRUCTURE WITH BOOTH UNDERNEATH FOR RIVER RENTALS
& SEATING

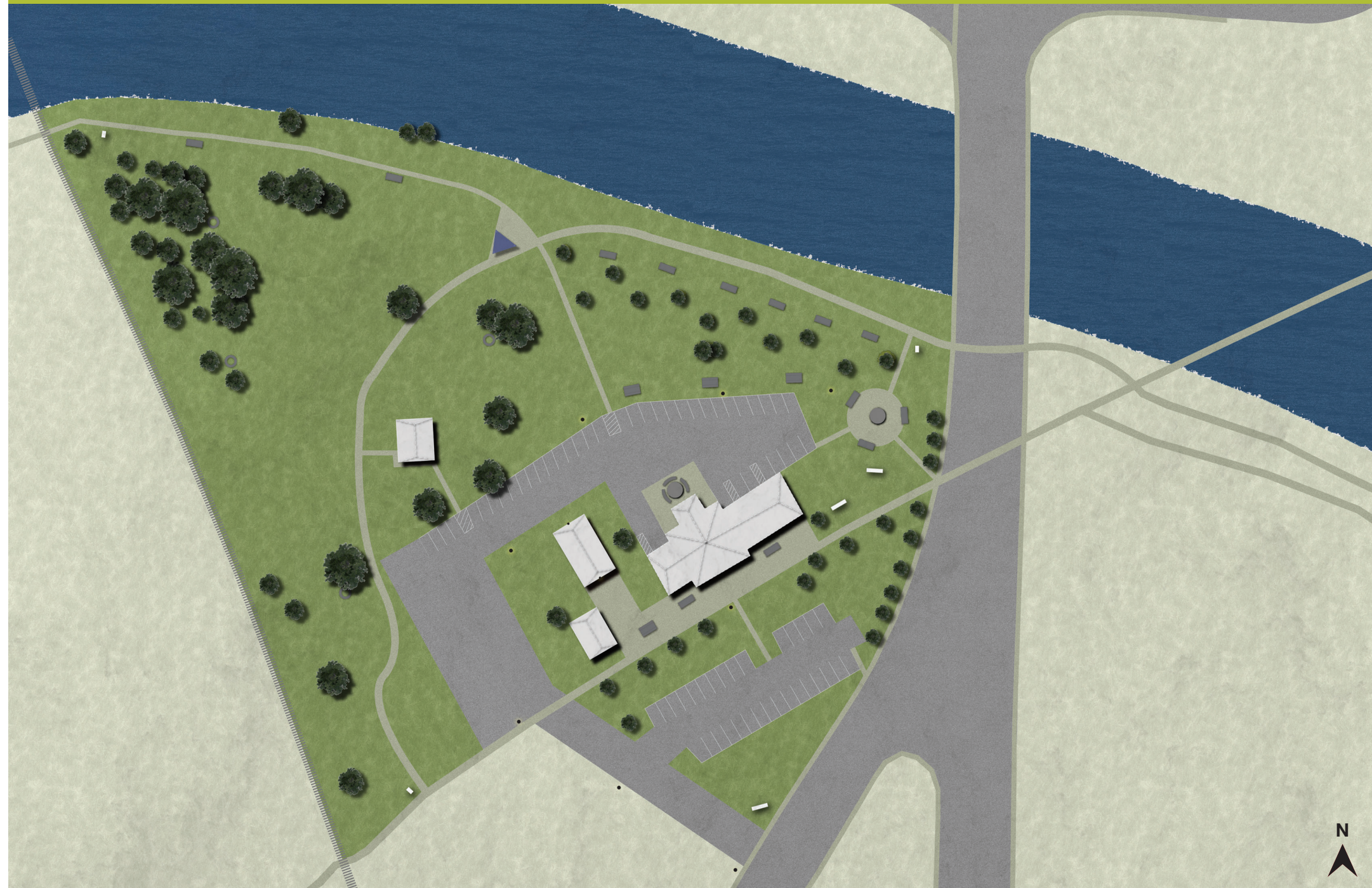


RIVER POLE RESTS FOR FISHING



CA&C RAILROAD DEPOT

The back parking lot has been paved with designated parking spaces, including ADA parking spaces. A gravel extension to the back parking lot has been made for festivals/gatherings. An outdoor restroom facility has been added for ease of access in the evenings and on the weekends. A canopy has been added for river equipment rental or to return what was rented from other parks. Several benches, bench swings and picnic tables have been added. 2 monuments have been added to the site to celebrate Mount Vernon and the history.

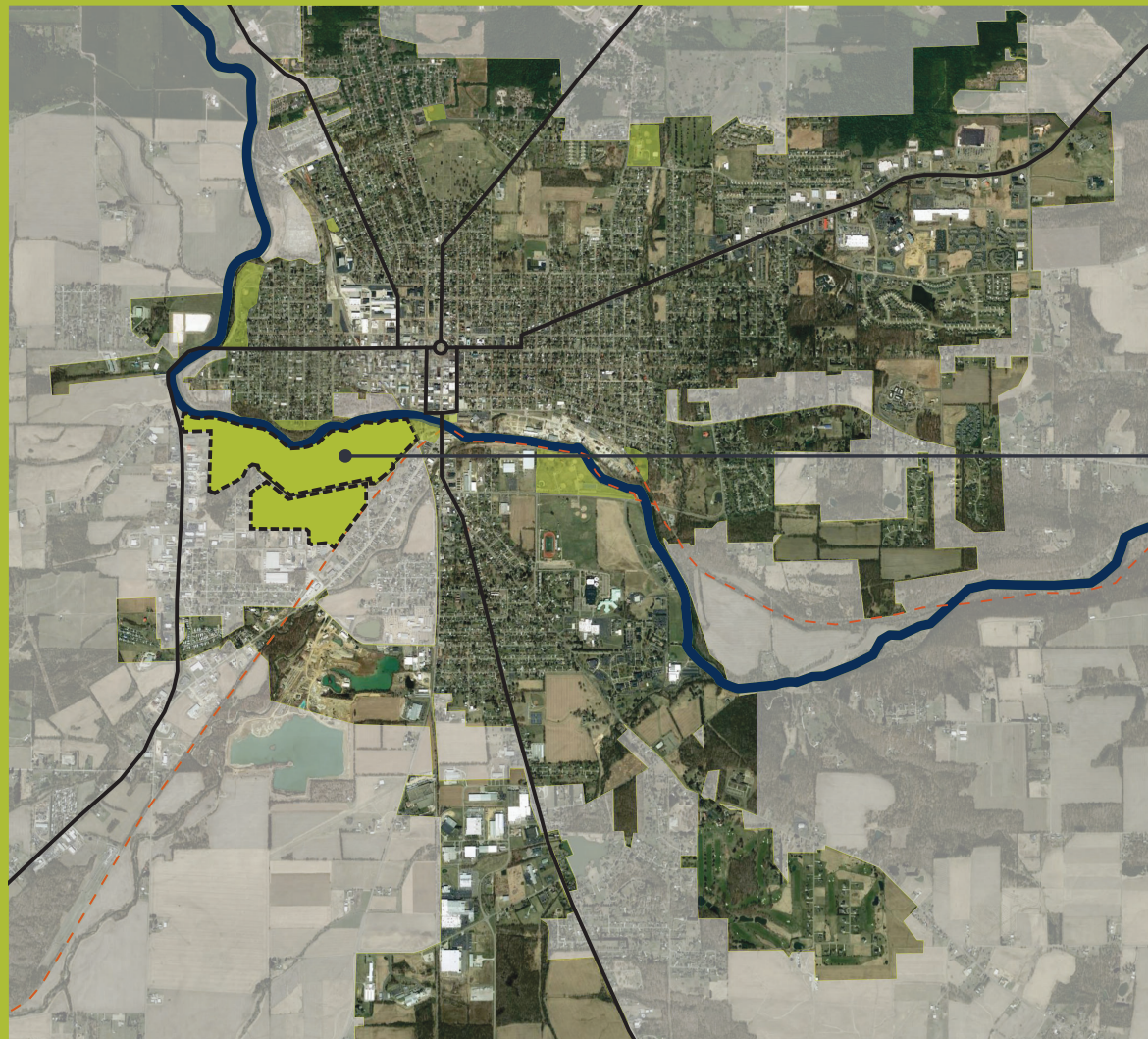




SECONDARY PARKS

ARIEL-FOUNDATION PARK

250 ACRES: COUNTY PARK



PAIN POINTS

- NO PLAYGROUND EQUIPMENT
- LACK OF TRASH ENCLOSURES
- LACK OF WEED MAINTENANCE
- NOISE POLLUTION DURING EVENTS

EXISTING IMAGERY



ARIEL-FOUNDATION PARK GOALS

COMMUNITY ENGAGEMENT

- CREATE NATURE WALK FOR KIDS
- CREATE HAUNTED TRAIL IN THE FALL
- HORSE CARRIAGE RIDES IN THE WINTER

FAMILY GATHERING

- SHELTER
 - + DEDICATE & PROVIDE SIGNAGE
 - + CLEAN & REPAINT SHELTER
 - + PROVIDE LIGHTING

POND ACCESS

- PONDS TRANSITION TO ICE SKATING IN THE WINTER
- FISHING
 - + FISHING POLE RENTAL
 - + PROVIDE FISHING POLE HOLDERS
 - + PROVIDE WEEKEND BAIT STAND

ADDITIONAL RECOMMENDATIONS

- DESIGNATED DOG PLAY AREA
- MORE TRASH ENCLOSURES
- YEARLY CAMPING UNDER THE STARS
- CREATE CONNECTION TO ARCH AVENUE PARK

ARCH AVENUE PARK

11 ACRES: NEIGHBORHOOD PARK



PAIN POINTS

- MINIMAL SIGNAGE
- NO PEDESTRIAN CIRCULATION
- PLAYGROUND
 - + GRAFFITIED OVER
 - + NO SEATING
 - + LACK OF WEED MAINTENANCE
- BASKETBALL COURT
 - + PAVEMENT CONDITION
 - + HALF COURT
 - + LIGHTING

EXISTING IMAGERY

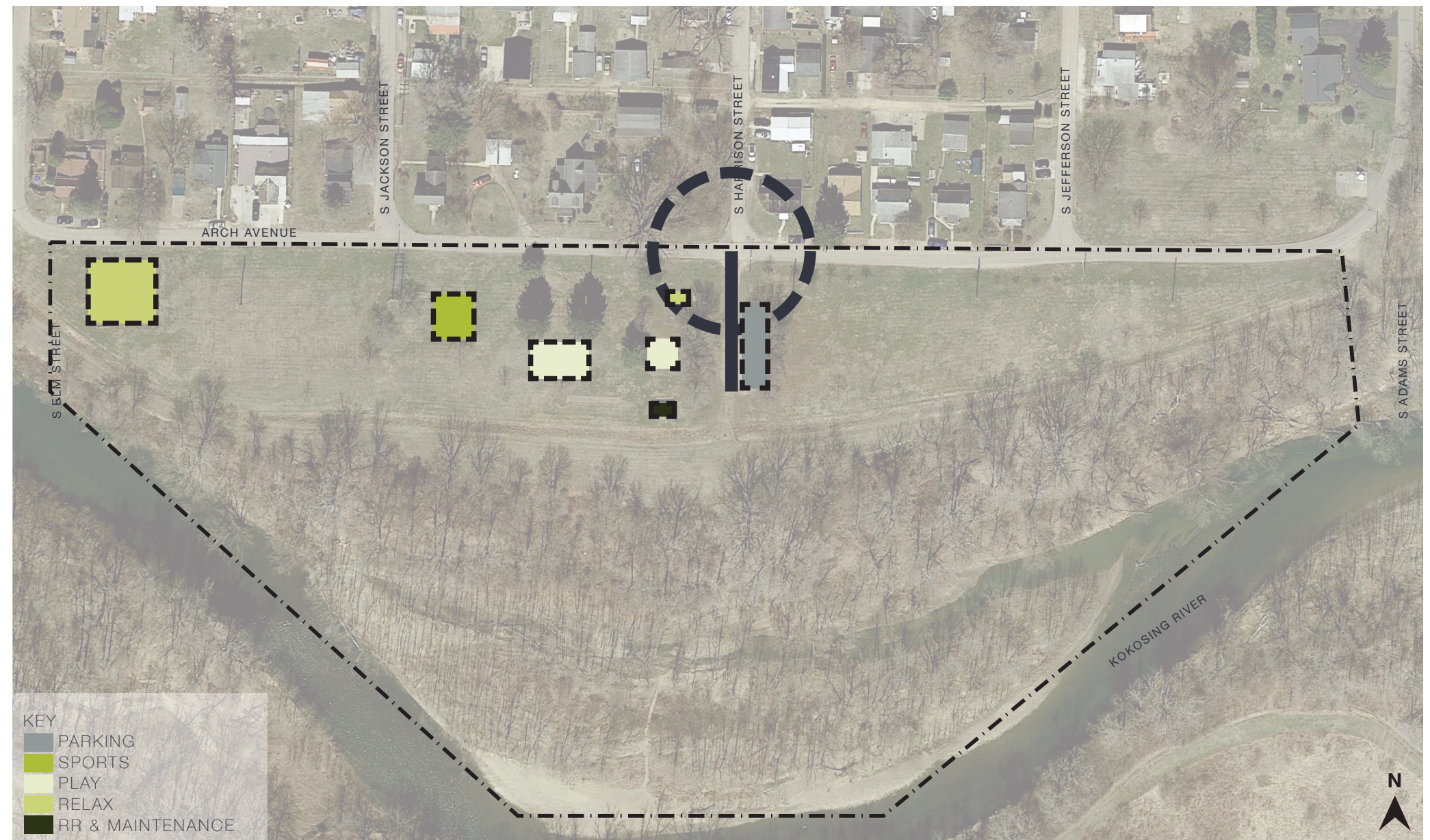


ARCH AVENUE PARK

EXISTING

Arch Park is a neighborhood park located along the Kokosing River in a residential neighborhood. It is not close to any main roads and is home to a community garden, some playground equipment, and a basketball hoop.

The park is surrounded by trees and nicely shaded but falls to vandalism due to location. The playground equipment has been graffitied over, weeds are overgrown, and the basketball court pavement is cracking.



ARCH AVENUE PARK GOALS

SPORTS

- BASKETBALL COURT
 - + EXTEND TO FULL SIZE
 - + PROVIDE LIGHTING & SEATING

FAMILY GATHERING

- SHELTER
 - + PROVIDE LIGHTING & ADDITIONAL PICNIC TABLE
 - + REPAINT & UPDATE SHELTER
- PICNIC TABLES
 - + PROVIDE 2 ADDITIONAL PICNIC TABLES
 - + PROVIDE CONCRETE PAD FOR EACH

PLAY

- REMOVE ALL CURRENT PLAYGROUND EQUIPMENT
- CREATE NATURE PLAYGROUND
- PROVIDE BENCHES
- CREATE WEED MAINTENANCE PLAN

COMMUNITY ENGAGEMENT

- GARDEN
 - + PROVIDE SIGNAGE & HOW TO'S
 - + PROVIDE BENCHES

RIVER ACCESS

- CLEAR PATH FOR ACCESS TO RIVER
- PROVIDE RIVER ACCESS SIGNAGE

ADDITIONAL RECOMMENDATIONS

- PROVIDE SMALL DROP IN RESTROOM
- CREATE .5 MILE WALKING TRAIL ON PARK PERIMETER
- CREATE NATURE WALK PATH THROUGH WOODED AREA BETWEEN PARK & THE KOKOSING RIVER
- POSSIBLE LOCATION FOR PHILANTHROPIST DONATED LOG CABIN

ARCH AVENUE PARK

NATURAL PLAY

WHAT IS A NATURAL PARK?

- CONSISTS OF ELEMENTS & TEXTURES FROM EARTH
- UNSTRUCTURED PLAY WITH NO FIXED OBJECTIVE



EMBANKMENT SLIDES OFFER CONSTANT THRILLS OF MOVEMENT & SPEED, & ENCOURAGE SCIENTIFIC CURIOSITY



THE LOG SLUICeway ALLOWS KIDS TO WATCH & MANIPULATE THE MOVEMENT OF WATER



THE STEPPING STUMPS AIDE IN LEARNING BALANCE AND AGILITY SKILLS BY MOVEMENT & IMAGINATION BY CREATING SCENES.



THE HANK DRUM INDUCES MUSICAL CREATIVITY & RELAXATION.

DAN EMMETT PARK

5.5 ACRES: SCHOOL PARK



PAIN POINTS

- BALL FIELDS
 - + LACK OF LIGHTING
- USE OF SCHOOL PLAYGROUND
- LACK OF CONNECTION TO OTHER PARKS

EXISTING IMAGERY



DAN EMMETT PARK

EXISTING

Dan Emmett Park is located on the north side of Mount Vernon right next to Dan Emmett School. It is a school park with 2 baseball fields, some parking, and a concession & restroom. The playground near the park is the school playground.

This park is important as it is one of the few parks in the area. There are limited amenities making it only really usable if you are there for baseball. There is additional land beside the park owned by the city.



DAN EMMETT PARK GOALS

SPORTS

- BALL FIELDS
 - + UPDATE DUGOUTS & PRESS BOX
 - + PROVIDE LIGHTING
- BATTING CAGE
 - + UPDATE
 - + CREATE MAINTENANCE PLAN
- CONCESSION/RESTROOM BUILDING
 - + ENSURE IT COMPLIES WITH BUILDING CODE
 - + CLEAN & PAINT

ADDITIONAL RECOMMENDATIONS

- CREATE AGREEMENT TO USE DAN EMMETT SCHOOLS PLAYGROUND

HIAWATHA PARK

19.5 ACRES: COMMUNITY PARK



PAIN POINTS

- LACK OF SIGNAGE
- PLAYGROUND EQUIPMENT IS BENT & CHIPPED
- BALL FIELDS
 - + LACK OF LIGHTING
 - + NO FENCING BOUNDARY
 - + NO PRESS BOX
- PRACTICE FIELDS
 - + NO FIELD MARKINGS
 - + LACK OF LIGHTING & SEATING
- SAND VOLLEYBALL COURTS
 - + LACK OF LIGHTING & SEATING
- BASKETBALL COURTS
 - + LACK OF LIGHTING & SEATING
 - + HALF COURT INTERFERES WITH FULL COURT

EXISTING IMAGERY

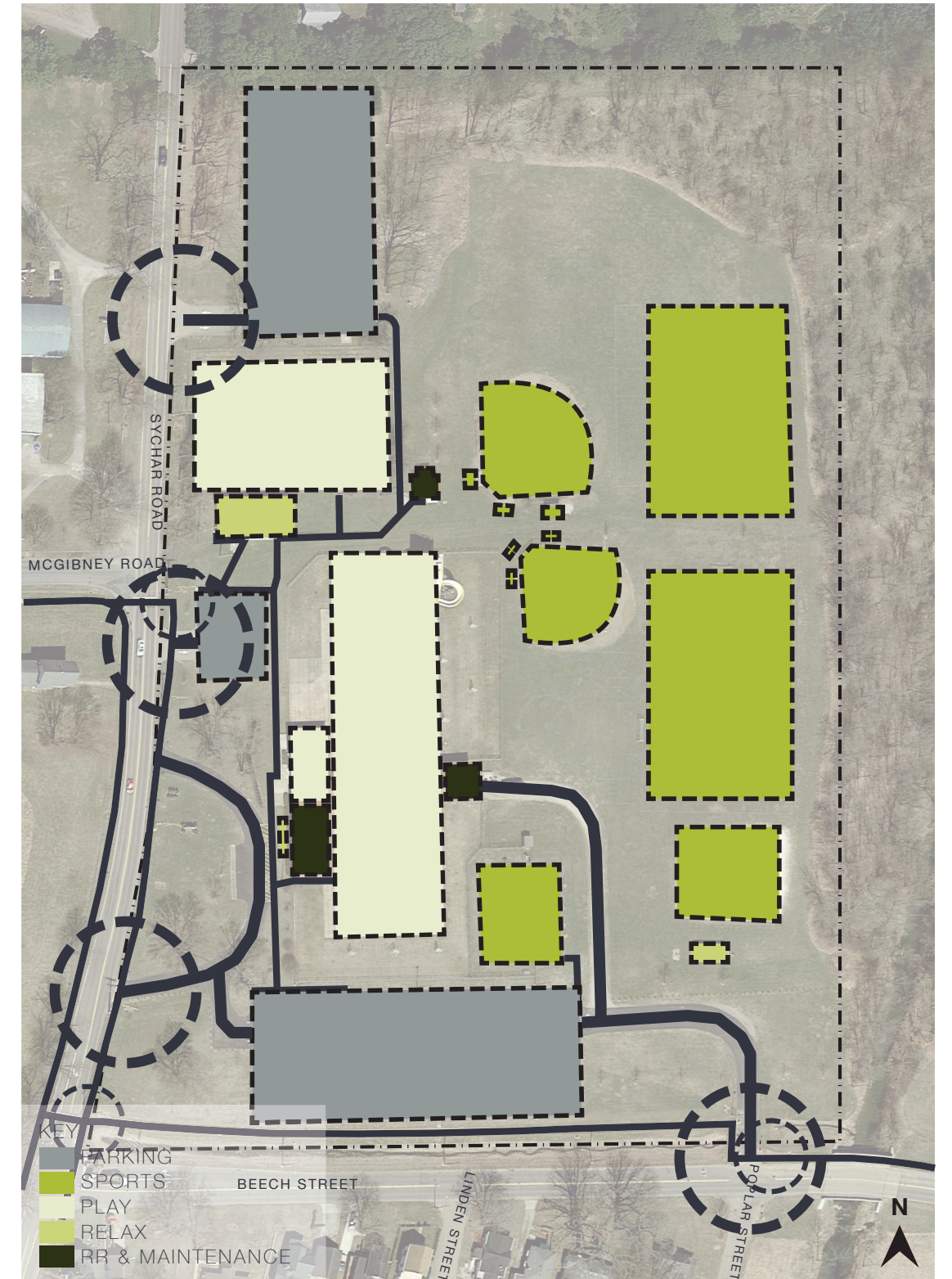


HIAWATHA PARK

EXISTING

Hiawatha Park is a community park located on the north side. It is home to the city's only community pool, 2 practice fields, 2 ball fields, a sand volleyball court, basketball courts, a playground, and open green space.

With the exception of the pool, this park has not seen many updates in several years. The shelter and playground equipment have seen their years of love, the fields are fading and well used, there is a lack of lighting throughout the park, and a lack of crosswalks to get from the residential areas to the park on such a busy street.



HIAWATHA PARK GOALS

SPORTS

- BALL FIELDS
 - + ADD PERIMETER BOUNDARY TO FIELDS
 - + PROVIDE LIGHTING
- PRACTICE FIELDS
 - + ADD MARKINGS TO FIELDS
 - + PROVIDE BENCHES
- BASKETBALL COURTS
 - + TAKE AWAY HALF COURT INTERFERENCE
 - + PROVIDE LIGHTING & BENCHES
- SAND VOLLEYBALL COURTS
 - + PROVIDE LIGHTING & BENCHES

FAMILY GATHERING

- PLAYGROUND SHELTER
 - + DEDICATE & PROVIDE SIGNAGE
 - + CLEAN & REPAINT SHELTER
 - + PROVIDE LIGHTING
- VOLLEYBALL COURT SHELTER
 - + DEDICATE & PROVIDE SIGNAGE
- POOL SEATING
 - + PROVIDE SHELTER IN POOL AREA

PLAY

- REMOVE ALL CURRENT PLAYGROUND EQUIPMENT
- CREATE OBSTACLE COURSE PLAYGROUND
- PROVIDE BENCHES

ADDITIONAL RECOMMENDATIONS

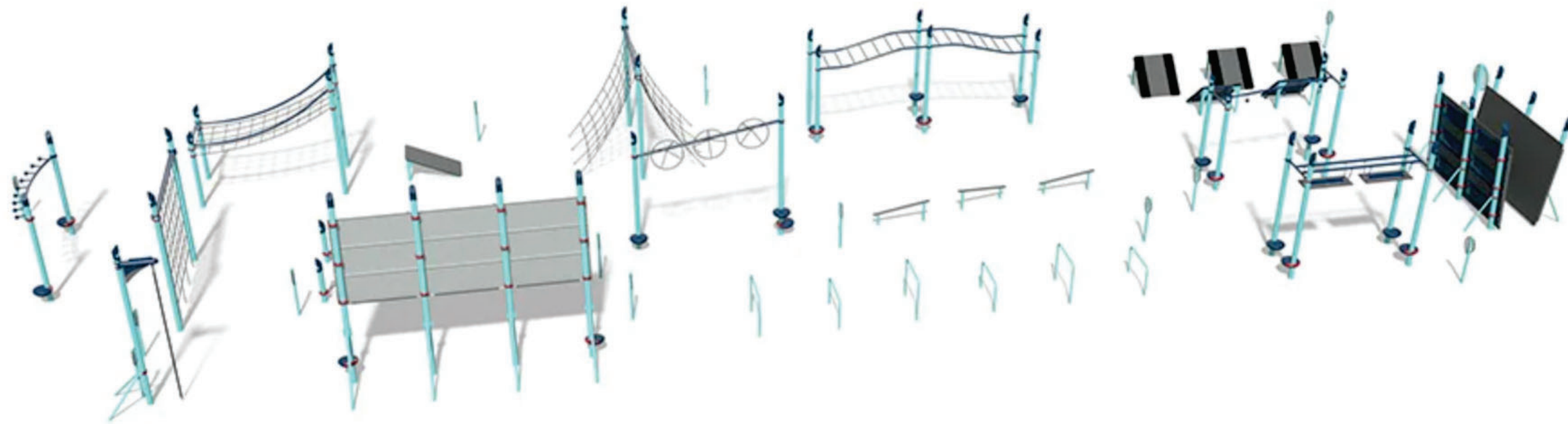
- ADDITIONAL CROSSWALK AT THE CORNER OF LINDEN & BEECH STREET
- ADDITIONAL CROSSWALK AT THE CORNER OF POPLAR & BEECH STREET
- PROVIDE DROP IN RESTROOM NEAR VOLLEYBALL & BASKETBALL COURTS

HIAWATHA PARK

PARK ELEMENTS

WHAT IS THE OBSTACLE COURSE?

- VARIOUS CHALLENGING PLAYGROUND EQUIPMENT
- MAKES EXERCISE FUN FOR ALL AGES



THE OBSTACLE COURSE BUILDS STRENGTH & BALANCE, PROBLEM SOLVING, COORDINATION AND MEMORY.

PHILLIPS PARK

6.1 ACRES: NEIGHBORHOOD PARK



PAIN POINTS

- LACK OF SIGNAGE
- PLAYGROUND
 - + EQUIPMENT IS BENT & CHIPPED
 - + LACK OF SEATING
 - + LACK OF WEED MAINTENANCE
- BALL FIELDS
 - + LACK OF LIGHTING
 - + CONCESSION STAND IS NOT UP TO CODE
- BASKETBALL COURT
 - + ONLY HALF COURT
 - + LACK OF SEATING & LIGHTING
 - + PAVEMENT CONDITION

EXISTING IMAGERY



PHILLIPS PARK

EXISTING

Phillips Park is a neighborhood park located at the Kokosing Trail head in a residential area. It is far off the main road and hidden in trees. In this park there are 2 ball fields, a basketball court, a shelter, and playground equipment.

Similar to Arch Park, Phillips Park is surrounded by trees and nicely shaded but falls to vandalism due to location. The restrooms have been graffitied and destroyed, weeds are overgrown, and the basketball court pavement is cracking.



PHILLIPS PARK GOALS

SPORTS

- BALL FIELDS
 - + UPDATE CONCESSION STAND TO CODE
- BASKETBALL COURT
 - + EXTEND TO FULL COURT
 - + PROVIDE LIGHTING & BENCHES

FAMILY GATHERING

- SHELTER
 - + DEDICATE & PROVIDE SIGNAGE
 - + CLEAN & REPAINT SHELTER
 - + PROVIDE LIGHTING

PLAY

- REMOVE ANY BENT & CHIPPED PLAYGROUND EQUIPMENT
- PROVIDE UPDATED EQUIPMENT
- PROVIDE BENCHES
- CREATE WEED MAINTENANCE PLAN

ADDITIONAL RECOMMENDATIONS

- REPLACE RESTROOM WITH DROP IN
- PROVIDE ADDITIONAL SMALL PARKING LOT ON THE CORNER OF LIBERTY STREET & THIRD ALLEY

SHELLMAR PARK

1 ACRE: POCKET PARK



PAIN POINTS

- LACK OF SIGNAGE
- BASKETBALL COURTS
 - + LACK OF LIGHTING
 - + LACK OF SEATING
- LIMITED PLAYGROUND EQUIPMENT

EXISTING IMAGERY



SHELLMAR PARK

EXISTING

Shellmar Park is a pocket park located in a residential neighborhood lacking in green space. It opened in 2020 with a goal to limit the crime happening in this west side neighborhood.

Although the park is very new, there is little to no signage to call out the park, no lighting for the basketball courts, no benches in the park, no bike racks, and only swings as the playground equipment. This park has great bones, just needs to be finished off.



SHELLMAR PARK GOALS

SPORTS

- BASKETBALL COURTS
 - + PROVIDE LIGHTING & BENCHES

FAMILY GATHERING

- SHELTER
 - + DEDICATE & PROVIDE SIGNAGE
 - + PROVIDE DRINKING FOUNTAIN
 - + PROVIDE LIGHTING
- CREATE GATHERING SPACES UNDER SHADE TREES

PLAY

- ADD A FEW MORE PLAYGROUND PIECES
- RELOCATE RIVERSIDE PARK SLIDE TO SHELLMAR PARK



IMPLEMENTATION STRATEGIES

GENERAL PARK GOALS

- SIGNAGE
 - + PROVIDE WELCOME PARK SIGNS AT EACH PARK MAIN ENTRANCE
 - SIGNS TO BE REMINISCENT OF PARK THEME
 - + PROVIDE SMALLER WELCOME PARK SIGNS AT EACH TRAIL ENTRANCE
 - + PROVIDE TRAIL DISTANCE MILEAGE & WALK TIMES TO NEXT PARKS
 - + PROVIDE 'STORY-TIME' SIGNAGE THROUGHOUT PLAYGROUND PATHS
 - + PROVIDE "MOUNT VERNON PARKS" BRANDING ON TRASH ENCLOSURES
- BUILDING PAINT
 - + ASSIGN PAINT COLOR TO ALL RESTROOMS
 - + ASSIGN PAINT COLOR TO ALL CONCESSION STANDS/PRESS BOXES
 - + ASSIGN PAINT COLOR TO ALL DUGOUTS
 - + ASSIGN PAINT COLOR TO ALL MAINTENANCE BUILDINGS
- BIKE RACKS
 - + PROVIDE BIKE RACKS AT EACH TRAIL ENTRANCE
- TRASH ENCLOSURES
 - + MORE & CONSISTENT ENCLOSURES THROUGHOUT PARKS
 - + DEDICATED DOG WASTE BAGS & BINS
- WATER FOUNTAINS
 - + MORE PLACED THROUGHOUT PARKS
 - + WATER FOUNTAIN FOR HUMANS & DOGS & WATER BOTTLE FILLING
- RESTROOMS
 - + REPLACE PARK RESTROOMS TO BE DROP-IN STYLE
 - + PROVIDE ACCESS YEAR ROUND
- ALL SEATING TO BE METAL OR ALUMINUM

MOUNT VERNON PARKS

FUTURE ELEMENTS - SIGNAGE



PARK SIGNAGE

'STORY-TIME' SIGNAGE

TRAIL SIGNAGE

MOUNT VERNON PARKS

FUTURE ELEMENTS - SEATING



TEEN GATHERING SPACES



ALUMINUM BLEACHERS WITH GUARD RAILS



METAL PICNIC TABLE



METAL BENCH

MOUNT VERNON PARKS
FUTURE ELEMENTS - MISC.



TRASH ENCLOSURES



BIKE RACKS



DRINKING FOUNTAIN



DOG WASTE STATION

CITY GOALS

- CREATE A TRAIL SYSTEM
 - + CONNECTS ALL PARKS
 - + INCLUDES WALKING & BIKING TRAIL
- CREATE A MOUNT VERNON PARKS MAP
 - + TRAIL TO EACH PARK
 - + PARK AMENITIES
 - + DISTANCE & BIKE/WALK TIME TO EACH PARK
- MOUNT VERNON PARKS WEBSITE
 - + SHOWS EACH PARK & AMENITIES
 - + ACCESS PARKS MAP
 - + ONLINE SCHEDULE SYSTEM/CALENDAR FOR FIELDS, SHELTERS & PARK EVENTS
- ACQUIRE ADDITIONAL LAND TO EXPAND
 - + CITY OF MOUNT VERNON RECREATION CENTER
 - + POCKET PARKS IN RESIDENTIALLY DENSE AREAS
 - + DOG PARK ON WEST SIDE
 - + BIGGER SKATE PARK WITH PARKING
- PARTNERSHIP WITH APARTMENT COMPLEXES
 - + BENEFITS TO APARTMENT COMPLEXES THAT PROVIDE PARK SPACE
 - + CREATE MAINTENANCE PLAN FOR APARTMENT PARKS
- PARTNERSHIPS WITH ALL SCHOOLS
 - + CONTRACTS TO HAVE PLAYGROUNDS OPEN

MOUNT VERNON PARKS *PROPOSED CONNECTION*

EXISTING

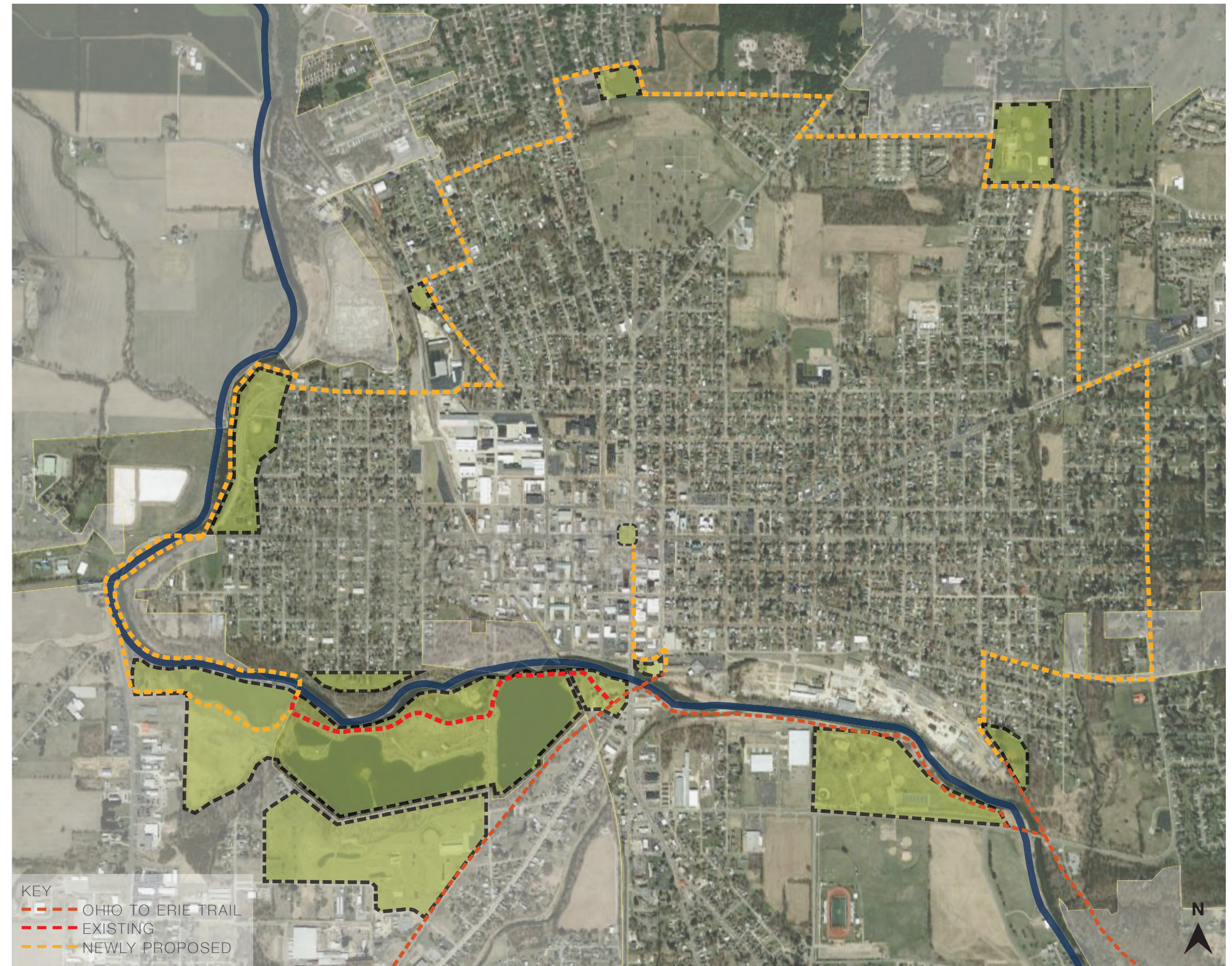
- OHIO TO ERIE TRAIL
 - + HEART OF OHIO TRAIL THROUGH ARIEL-FOUNDATION
 - + HEART OF OHIO TRAIL AT CA&C DEPOT & HERITAGE CITY PARK
 - + KOKOSING TRAIL THROUGH MEMORIAL PARK & PHILLIPS PARK
- WALKWAYS
 - + PAVED WALKWAYS FROM CA&C TO ARIEL-FOUNDATION

PROPOSED

- BRIDGE FROM ARIEL-FOUNDATION TO ARCH CITY PARK
- TRAIL THAT CONNECTS EACH PARK
 - + DIRECTIONAL SIGNAGE ALONG EXISTING SIDEWALKS
 - + ADDITION OF BIKE LANES ON TRAIL ROADS
 - + ADDITION OF CROSSWALKS AS NECESSARY
- PROVIDE OUTDOOR EXERCISE EQUIPMENT EVERY 1 MILE

COMPLETION

- CREATES 8 MILE LOOP
 - + CONNECTS ALL PARKS
 - + CONNECTS RESIDENTIAL AREAS TO PARKS
 - + MORE ACCESS TO GET FROM POINT A TO POINT B
- OPPORTUNITY FOR MORE TRAIL
 - + ADDITION OF NEW PARKS
 - + ADDITION OF CONNECTIONS THROUGH THE CENTER



MOUNT VERNON PARKS *EXPANSION OPPORTUNITY*

ADDITIONAL PARKS

- DOG PARK
 - + ACROSS THE RIVER FROM RIVERSIDE PARK
- POCKET PARK
 - + RESIDENTIALLY DENSE MOUNT VERNON CENTRAL EAST
- RECREATION CENTER
 - + ALONG LOOP TRAIL DOWNTOWN
- SKATE PARK
 - + ACROSS FROM MEMORIAL PARK

TRAILS/BIKE LANE

- ADDITION TO EACH POCKET PARK
- ADDITION FROM PROPOSED POCKET PARK TO THE SQUARE
- ADDITION TO WOLF RUN PARK

